



Snap Dock's Snap Port System

Owner's Manual & Assembly Guide
Published: July 25, 2022

For questions about Snap Dock's operation/performance, products, accessories, and parts call your local dealer for information.

Visit our website at www.snapdock.com to find more information about our products.

Table of Contents

General Information-----	1
Snap Port Product Specifications-----	2
Snap Port Coupler Assembly-----	3
Snap Port Assembly-----	4
Anchoring Overview-----	12
Connecting to Snap Dock’s Floating Dock-----	13
Pipe Anchoring Overview-----	14
Pipe Anchoring Using Port Holes-----	15
Pipe Anchoring Using Pipe Brackets-----	16
Hinge Kit Adapter Overview-----	17
Hinge Kit Adapter: Installation-----	18
Stand Off Bracket Overview-----	19
Stand Off Bracket: Installation-----	20
Snap Port Maintenance Information-----	21
Snap Port Winter Maintenance Information-----	22

General Information


Company Note:

Thank you for choosing Snap Dock's Snap Port system. To learn more about our products including Docks, the Snap Port and accessories visit www.snapdock.com or call 1 (800) 483-5205 to speak with a customer service representative.

Assembly Overview:

The following instructions will cover the installation process of properly installing a Snap Port system. Every installation is different; therefore Snap Dock recommends that each installation be surveyed and planned.

Important: Snap Dock's assembled port, port front, and port entry sizes and weights (Page 2) will make moving one difficult by oneself. No less than two people should maneuver a port front or entry at a given time. *[In addition, connecting a snap port onshore is highly discouraged as injury to installers or damage to the dock may occur, for which Snap Dock is not liable.]*



WARNING

WARNING: swimming or attempting to breathe inside the pockets underneath the dock is hazardous and may result in drowning or death.

To ensure the safety of the installers, use the In-Water Installation Tool to assemble the Snap Dock product on the water.

Tool Recommendation Checklist:

The tool list is comprised of required to assemble the floating dock sections. For more information on professional help, reach out to your local dealer.

Required Tools:

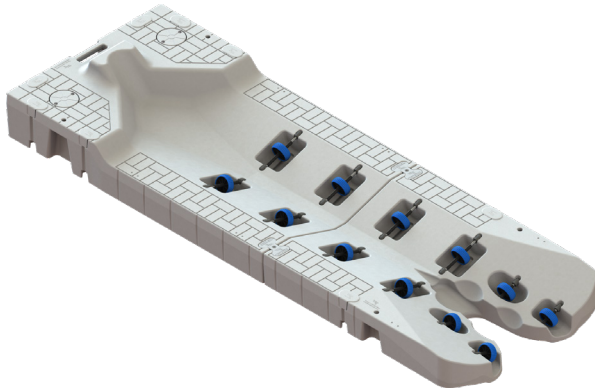
- | | |
|---|--|
| <input type="checkbox"/> In-Water Installation Tool (SKU: SNAP INSTALL) | <input type="checkbox"/> Drive Tool (SKU: DRIVETOOL) |
| <input type="checkbox"/> Dead Blow/ Mallet Hammer | <input type="checkbox"/> Socket Wrench |
| <input type="checkbox"/> 1 ⁵ / ₁₆ Socket | <input type="checkbox"/> Rope |
| <input type="checkbox"/> Screwdriver | |

Product Registration Link:

Visit snapdock.com/product-registration/ to register a new Snap Port system within 90 days of purchase.

To learn more about Snap Dock's limited liability warranty visit: snapdock.com/warranty

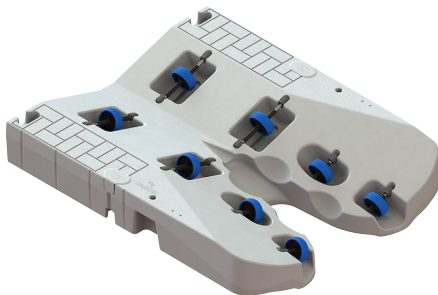
Snap Port Product Specifications



SKU	SNAP PORT-ASSY-GR
Length	168"
Width	59"
Height	14.4"
Weight	370 lbs./ 168 kgs.
Buoyancy	1750 lbs./ 794 kgs.



SKU	PORT FRONT-GR-ASSY
Length	96"
Width	59"
Height	14.4"
Weight	209 lbs./ 95 kgs.



SKU	PORT ENT-GR-ASSY
Length	72"
Width	59"
Height	14.4"
Weight	140 lbs./ 64 kgs.

Snap Port Coupler Assembly

Step #1 | Take one coupler (B) and short bolt (C) from the Port coupler set and secure the pieces together using a mallet.

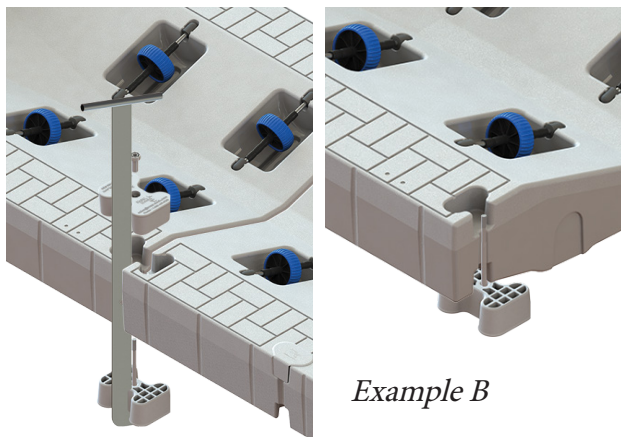
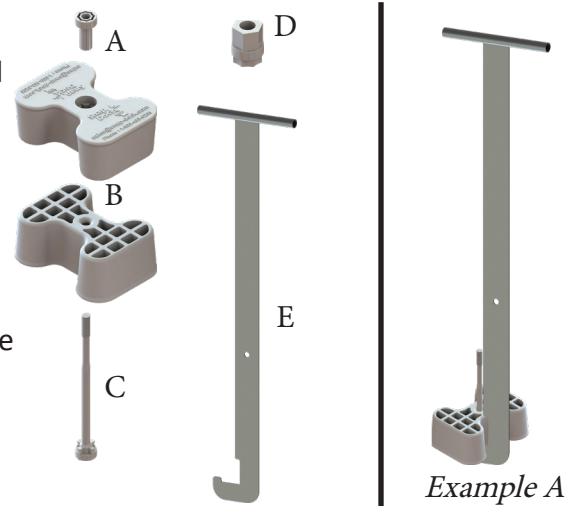
Step #2 | Take the partially assembled Port coupler (BC) and insert it into the In Water Installation Tool (E) (see **example A**). [Partially Assembled Port Coupler is held in the In-Water Installation Tool by friction].

Quantity	Product Name	SKU
1	Port Coupler Set	CPLR-PORT-GR
1	In Water Installation Tool	SNAP INSTALL

Step #3 | Run the tool with the assembled port coupler along the seam to the bottom pocket.

Step #4 | To seat the partially assembled Port coupler, pull up on the In Water Installation Tool until the bolt appears in the top pocket. Use a screwdriver to slide through the visible hole to hold the In-Water Installation Tool in place (**Note: The docks must be level while the assembly is taking place on the water for the couplers to seat correctly into the pockets. In contrast, the lead installer will stand between the Port front and Port entrance to keep both sides level. See example B**).

Step #5 | Insert the second coupler into the top pocket and secure it with the nut (NUT-GR) and drive tool (DRIVETOOL).

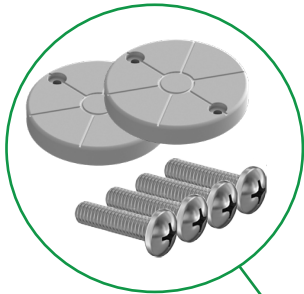


Important: Snap Dock’s assembled Port, Port front, and Port entrance sizes and weights (Page 2) will make moving one section difficult. No less than two people should maneuver a Port front or entrance at a given time. *[In addition, connecting a Snap Port onshore is highly discouraged as injury to installers or damage to the dock .]may occur.*

Snap Port Assembly

1

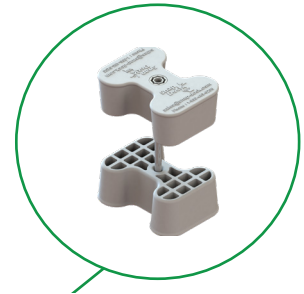
Check for all Snap Port parts prior to assembly.



(2) Port Cover:

SKU PORT COVER-ASSY-GR

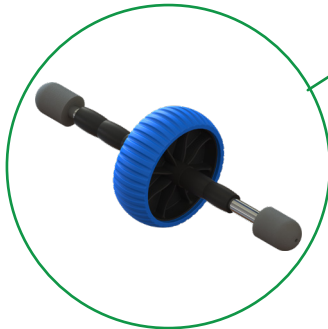
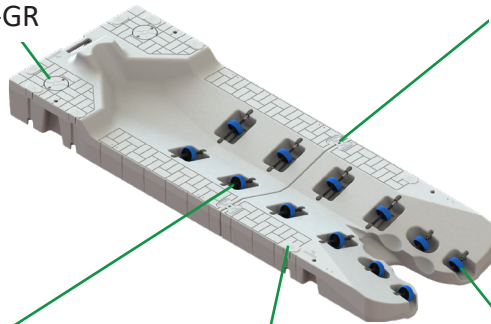
Bill Of Material
 2 PORT COVER-GR
 4 SCREW-COV



(2) Port Coupler Set:

SKU CPLR-PORT-GR

Bill Of Material
 2 CPLR-GR
 1 BOLT-S-GR
 1 NUT-GR
 1 DRIVETOOL



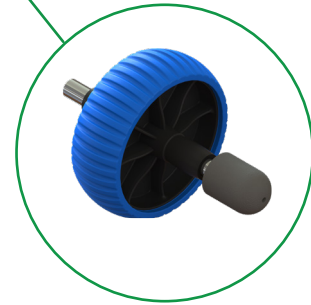
(8) Roller Kit - Long Axle:

SKU ROLLER-L
 Bill Of Material
 5 SPACER
 1 WHEEL
 2 PLUG
 1 SBAR-15



(8) Pocket Filler:

SKU PFILL-GR
 Bill Of Material
 8 PFILL-GR

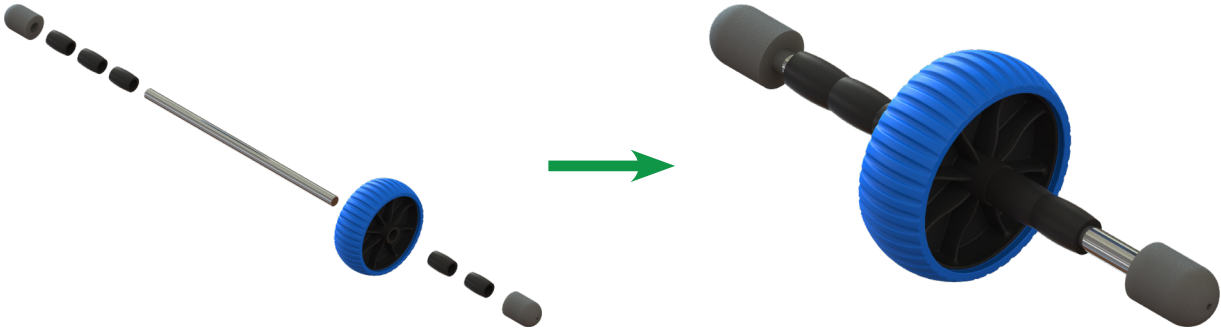


(4) Roller Kit - Short Axle:

SKU ROLLER-S
 Bill Of Material
 2 SPACER
 1 WHEEL
 1 PLUG
 1 SBAR-8

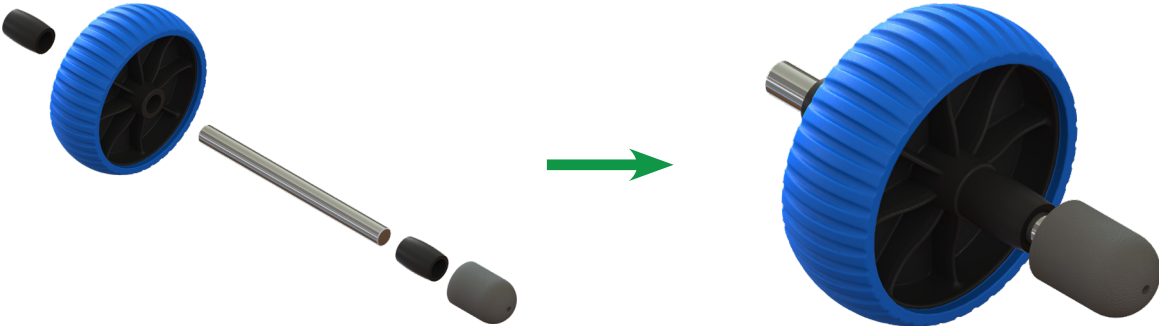
2

Assemble (8) long axle roller kits to include (5) SPACER, (1) WHEEL, (2) PLUG, and (1) SBAR-15.



3

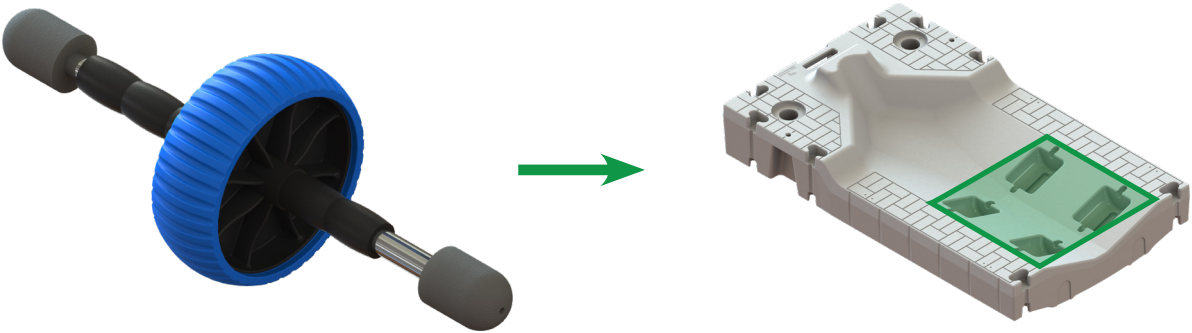
Assemble (4) short axle roller kits to include (2) SPACER, (1) WHEEL, (2) PLUG, and (1) SBAR-8.



Note: Please note that the PWC hull needs to have full contact with each wheel on the Snap Port. Adjustments to add or subtract spacers may be needed to achieve full contact.

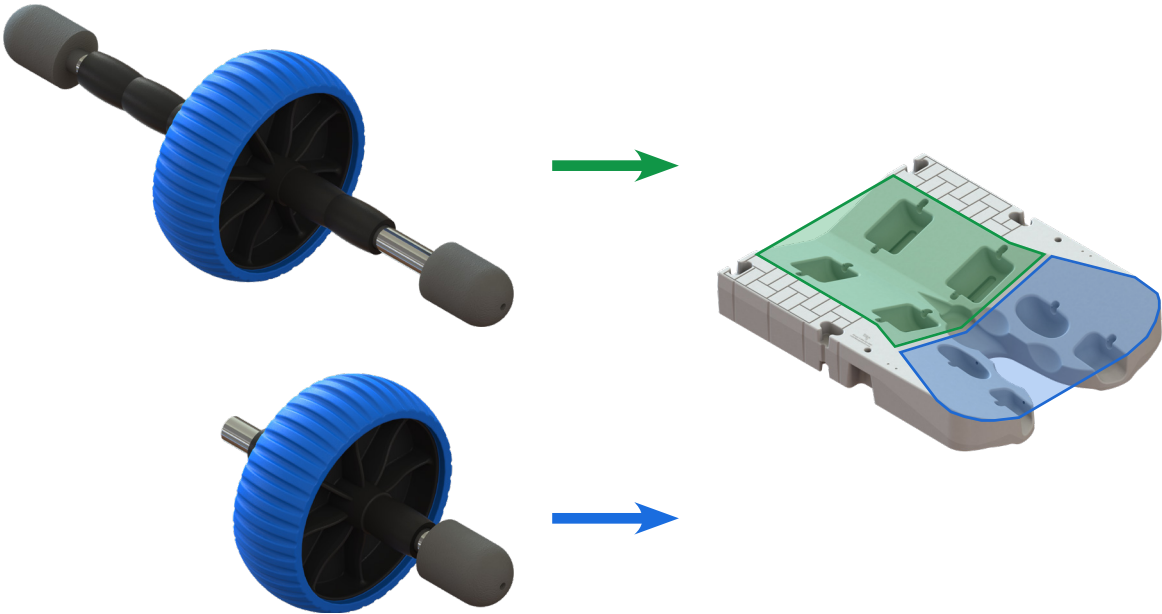
2

Use a mallet or a hand to insert (4) assembled long axle roller kits into the Port Front's roller pockets.



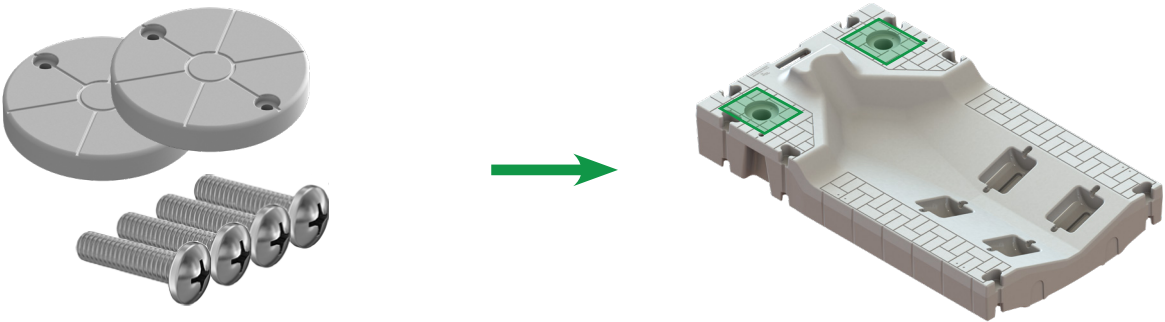
3

Use a mallet or a hand to insert (4) assembled long axle and (4) short axle roller kits into the Port Front's roller pockets.



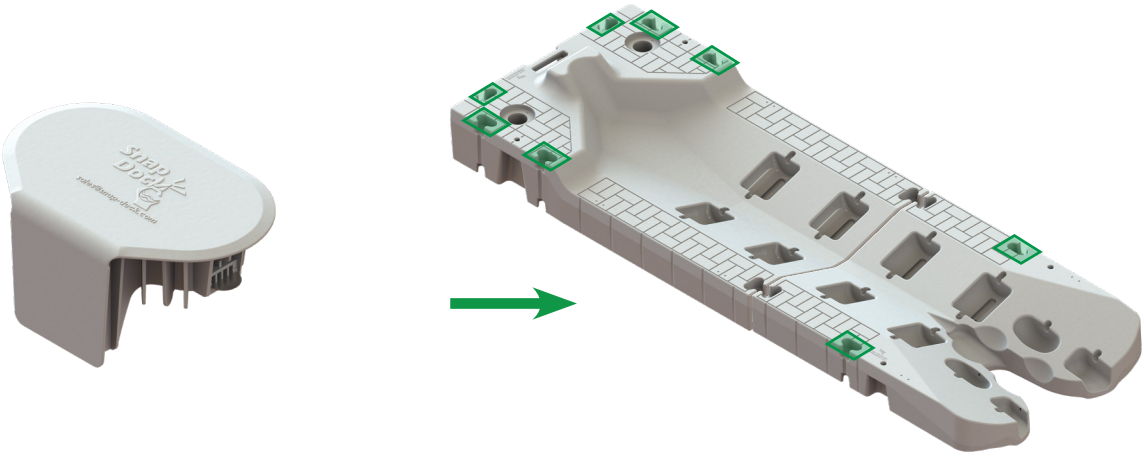
4

Position both port covers over the integrated holes, and use a phillips head screw driver to secure into place.

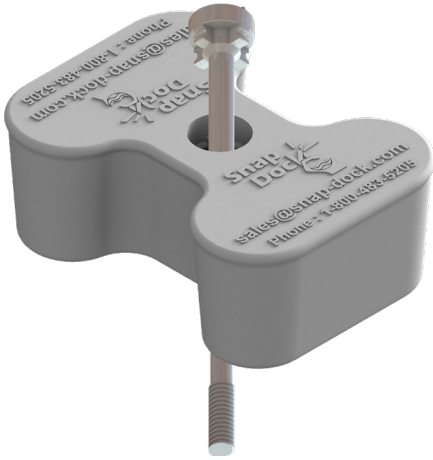


5

Insert pocket fillers into the vacant pockets.



5 Insert short bolt into coupler.



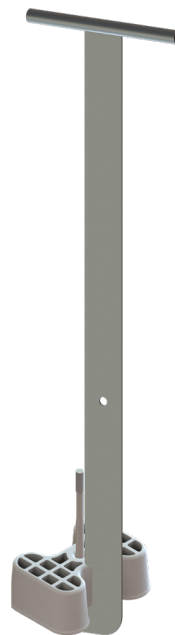
6 Firmly use mallet to seat the short bolt.



7 Partially Assembled Port Coupler.

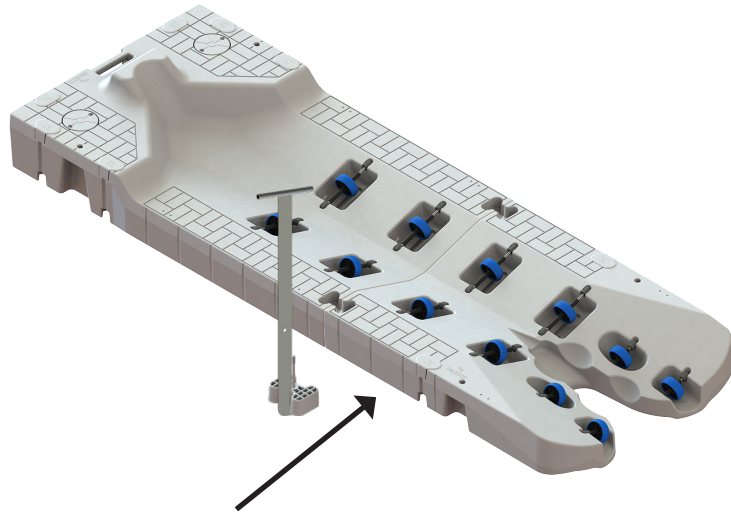


8 Position the Partially Assembled Port Coupler perpendicular onto the In Water Installation Tool (Here after referred to *Installation Tool*).



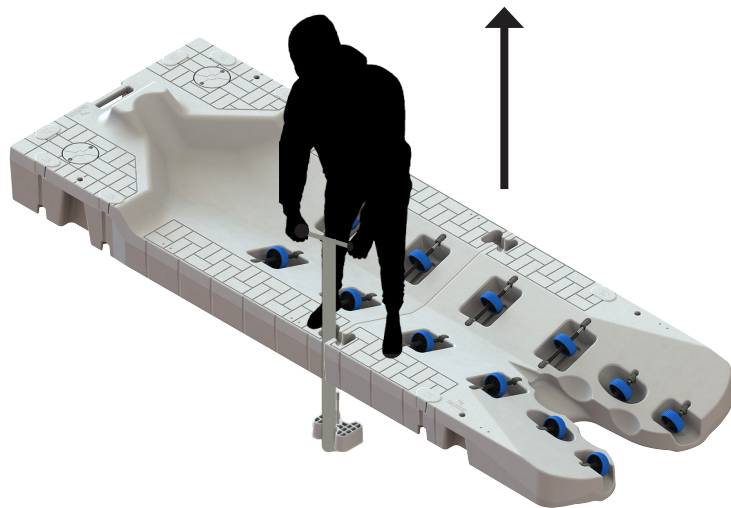
9

Run the tool with the partially assembled port coupler along the seam to the bottom pocket.



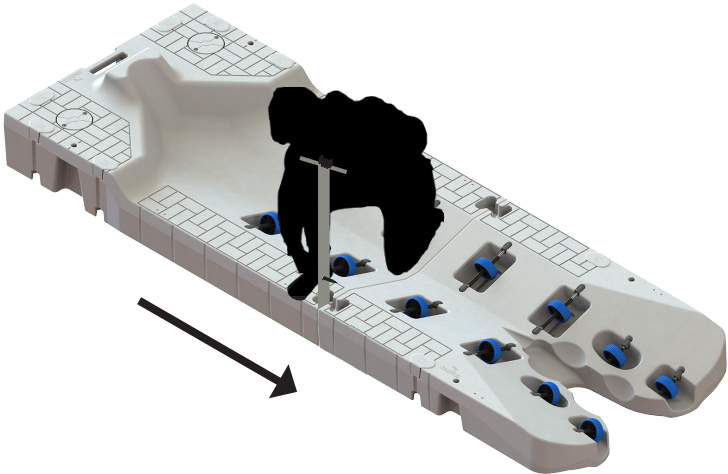
10

To seat the partially assembled port coupler, pull up on the Installation Tool until the bolt appears in the top pocket.



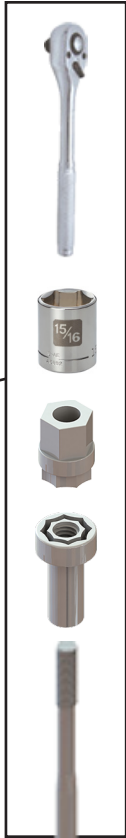
11

Use a screwdriver to slide through the visible hole in the Installation Tool to hold the partially assembled port coupler in place.



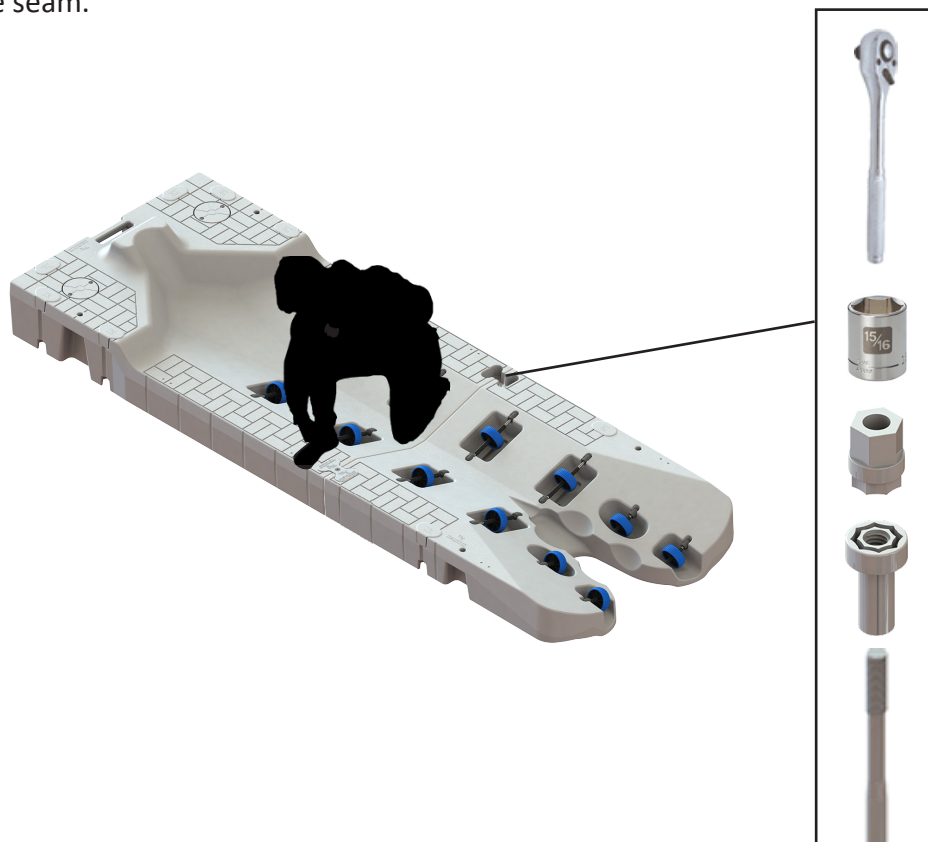
12

Use the Nut and Drive Tool (Need $\frac{15}{16}$ Socket & socket wrench) included in the port coupler set to secure the second coupler into the top pocket to finish the coupler installation.



13

Repeat steps 5 through 12 on the other pocket along the seam.



14

To install multiple Snap Ports align the two ports side-by-side. Use the two side pockets outlined to connect the ports by repeating steps 5-12 using CPLR-SET-GR.



Anchoring Overview

Overview:

To determine the anchor system needed for a design, customers must know three factors: type of waterscape, installation location in a exposed area, and water depth before moving toward anchor selection. Consult with a local dealer to determine options for anchoring if needed.

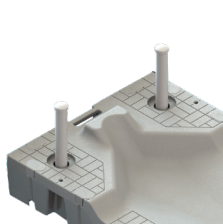
The following Snap Port anchoring methods with descriptions are listed below:

Coupler Attachment: Snap Dock Products assemble with our patent-pending coupler system. Snap Ports can attach directly to the dock section platform using the coupler system.

Pipe Anchoring: Commonly used in residential or small-scale commercial waterfronts up to eighteen feet. Allows horizontal movement is an added benefit for waters that fluctuate during seasons.

Hinge Kit Adapter Anchoring: The hinge kit adapter provides direct contact to a side of an existing platform, while allowing the Snap Port vertical movement to curb wave action.

Stand Off Bracket Anchoring: The stand-off bracket supports vertical pipe fixed to the side of an existing platform but can also serve as . The system can be paired with a stand alone installation to add vertical support.



Stand Alone
Anchoring



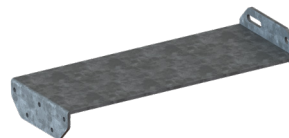
Pipe Anchoring



Coupler
Anchoring

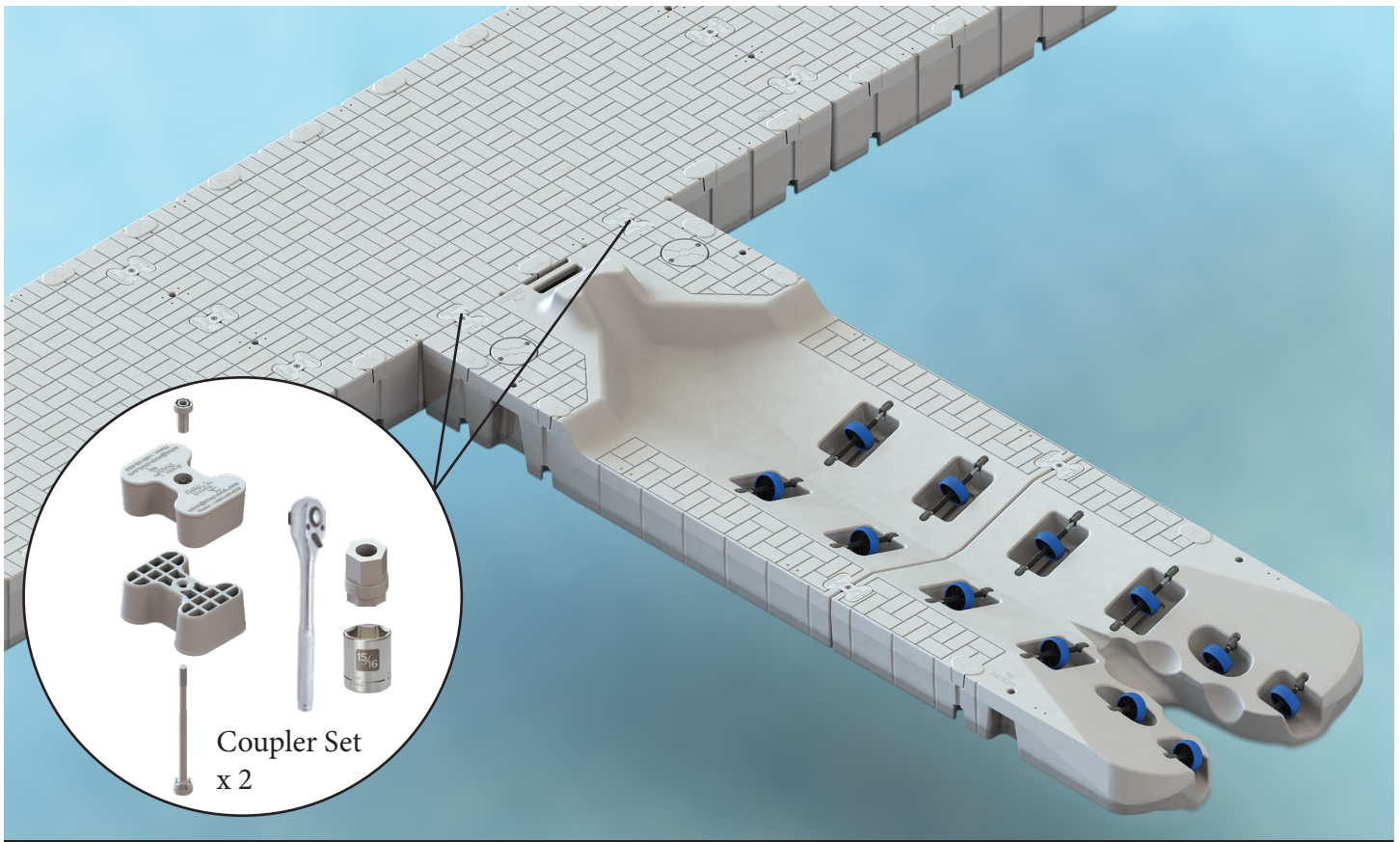


Hinge Kit Adaptor
Anchoring



Z Stand Off Bracket
Anchoring

Connecting To Snap Dock's Floating Dock



- 1 **Assembly of a Partially Assembled Coupler:** Take one coupler and long bolt from the coupler set and secure the pieces together using a mallet.
- 1a Place the Standard Duty Pipe Bracket flush with the desired top/ bottom pockets. Use a Partially Assembled Coupler and place in the bottom pockets of the dock and Standard Duty Pipe Bracket.
- 2 While holding the Partially Assembled Coupler, insert a coupler in the top pockets and hand tighten a nut on to the long bolt.
- 3 Use The Drive Tool and a $\frac{15}{16}$ socket wrench to finish tightening the nut. Note: The nut should not be overtightened.

Pipe Anchoring Overview

Overview:

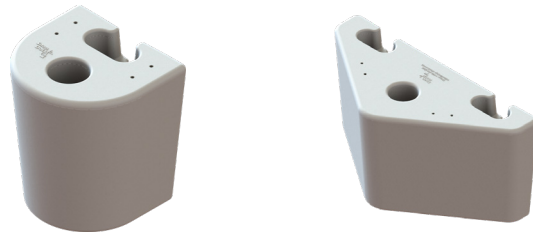
Snap Dock offers two different pipe anchoring brackets: The Standard Duty Pipe Bracket (SKU: STD-BRKT-GR-ASSY) installed with one coupler set, and the Heavy Duty Pipe Bracket (SKU: HD-BRKT-GR-ASSY) that is installed with two coupler sets.

We recommend utilizing the Standard Duty or Heavy Duty pipe bracket with water depths up to 18'. If water levels are deeper than the recommended depths mentioned above, please refer to deadweight anchoring methods.

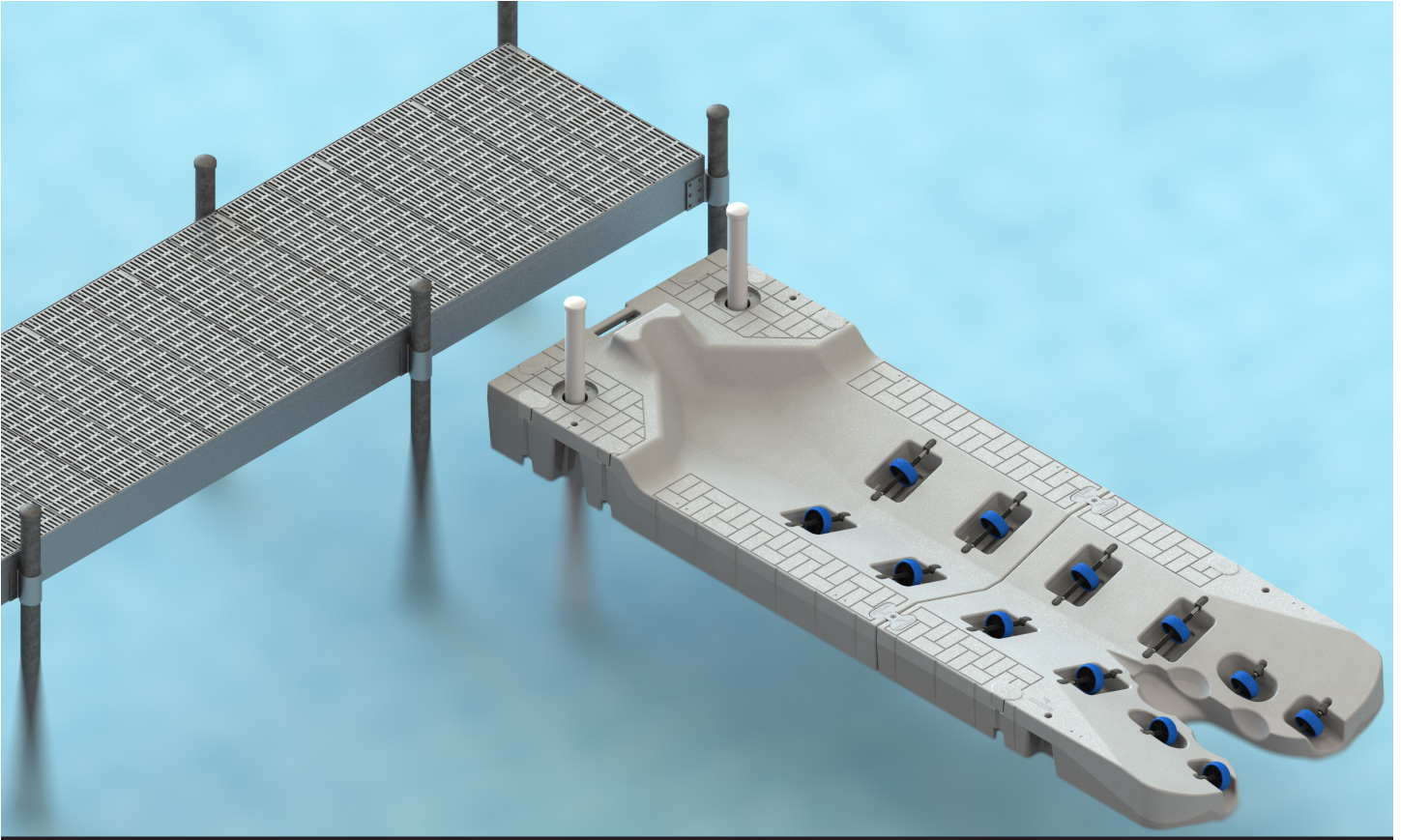
Product Name	SKU
Standard Duty Pipe Bracket	STD-BRKT-GR-ASSY
Heavy Duty Pipe Bracket	HD-BRKT-GR-ASSY

Pipe Bracket Benefits:

The use of our Standard or Heavy Duty Pipe Brackets has two advantages over using the Port holes; it allows the Snap Port to be repositioned without pulling the pipes, and minimizes the potential for damage caused by a pipe.

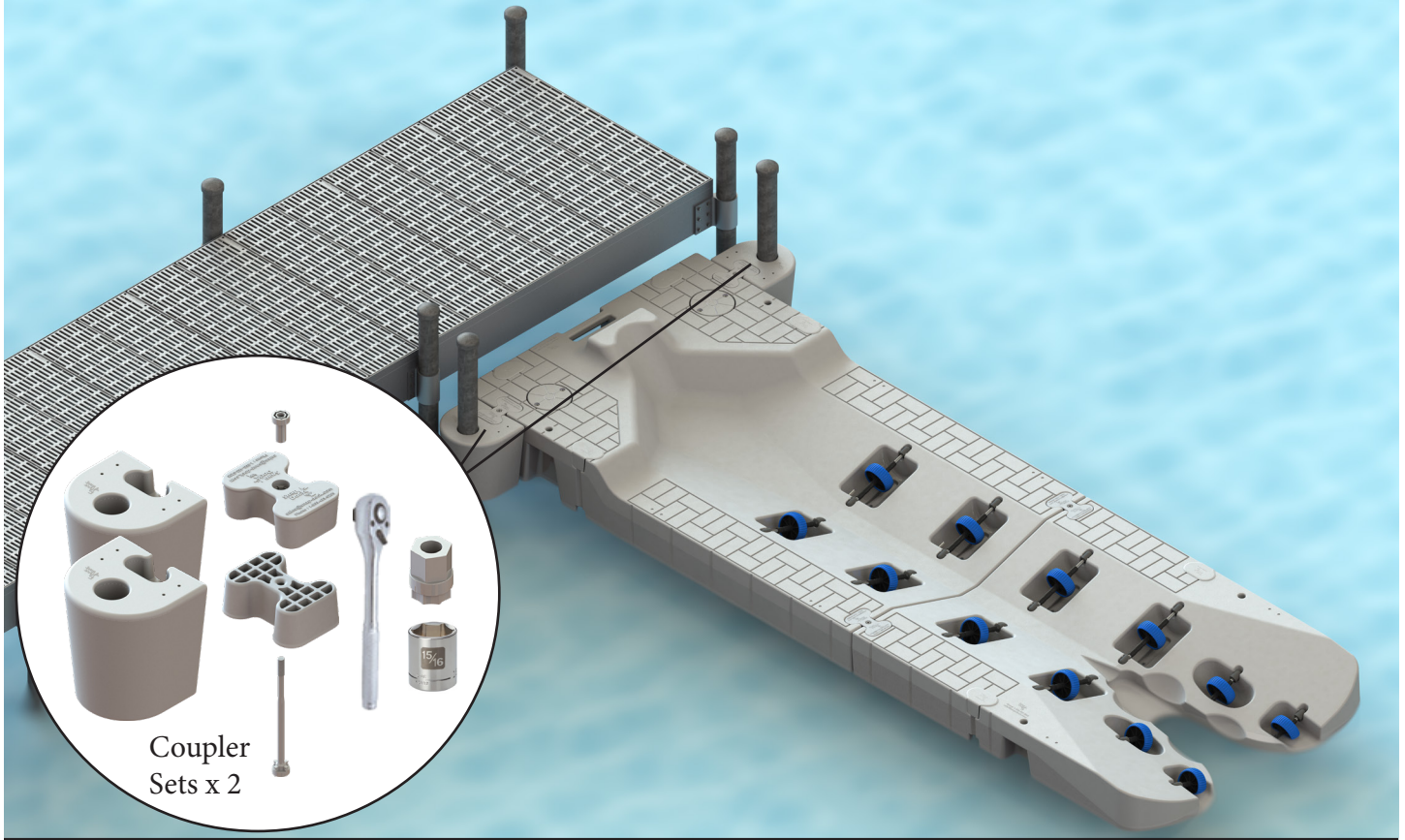


Pipe Anchoring Using Port Holes



- 1 Position the assembled Snap Port in the desired install location.
- 2 Find the Port holes which is located beside the bow stop.
- 3 Insert a 2" nominal metal pipe (Aluminum or Galvanized) into the anchoring hole. **Rule of Thumb:** Metal pipes will need to penetrate a minimum $\frac{1}{3}$ of the total depth of the water into the lake bed.
- 4 Once the pipes are firmly secured into lake bed, use a capped 3" nominal PVC pipe to slide over the newly installed 2" nominal pipes. This will protect the port from normal wear and tear. **NOTE:** Snap Dock's warranty does not cover damage incurred by metal pipes that do not have PVC cover.

Pipe Anchoring Using Pipe Brackets



- 1 **Assembly of a Partially Assembled Coupler:** Take one coupler and long bolt from the coupler set and secure the pieces together using a mallet.
- 1a Place the Standard Duty Pipe Bracket flush with the desired top/ bottom pockets. Use a Partially Assembled Coupler and place in the bottom pockets of the dock and Standard Duty Pipe Bracket.
- 2 While holding the Partially Assembled Coupler, insert a coupler in the top pockets and hand tighten a nut on to the long bolt.
- 3 Use The Drive Tool and a $\frac{15}{16}$ socket wrench to finish tightening the nut. **Note: The nut should not be overtightened.**

Hinge Kit Adapter Overview

Overview:

The hinge kit adapter is a Snap Dock's solution for attaching the Snap Port to existing floating docks. The hinge kit is a three-part system that includes a mounting plate, a pin bolt, and a universal plate.

Snap Dock offers galvanized and stainless steel options to accommodate fresh and saltwater installations.

Product Name	SKU
Universal Galvanized Hinge Kit	HINGE-KIT-GALV-U
Extended Galvanized Hinge Kit	HINGE-KIT-GALV-XL
Universal Stainless Steel Hinge Kit	HINGE-KIT-GALV-SS-U
Stainless Steel Hinge Kit	HINGE-KIT-GALV-SS

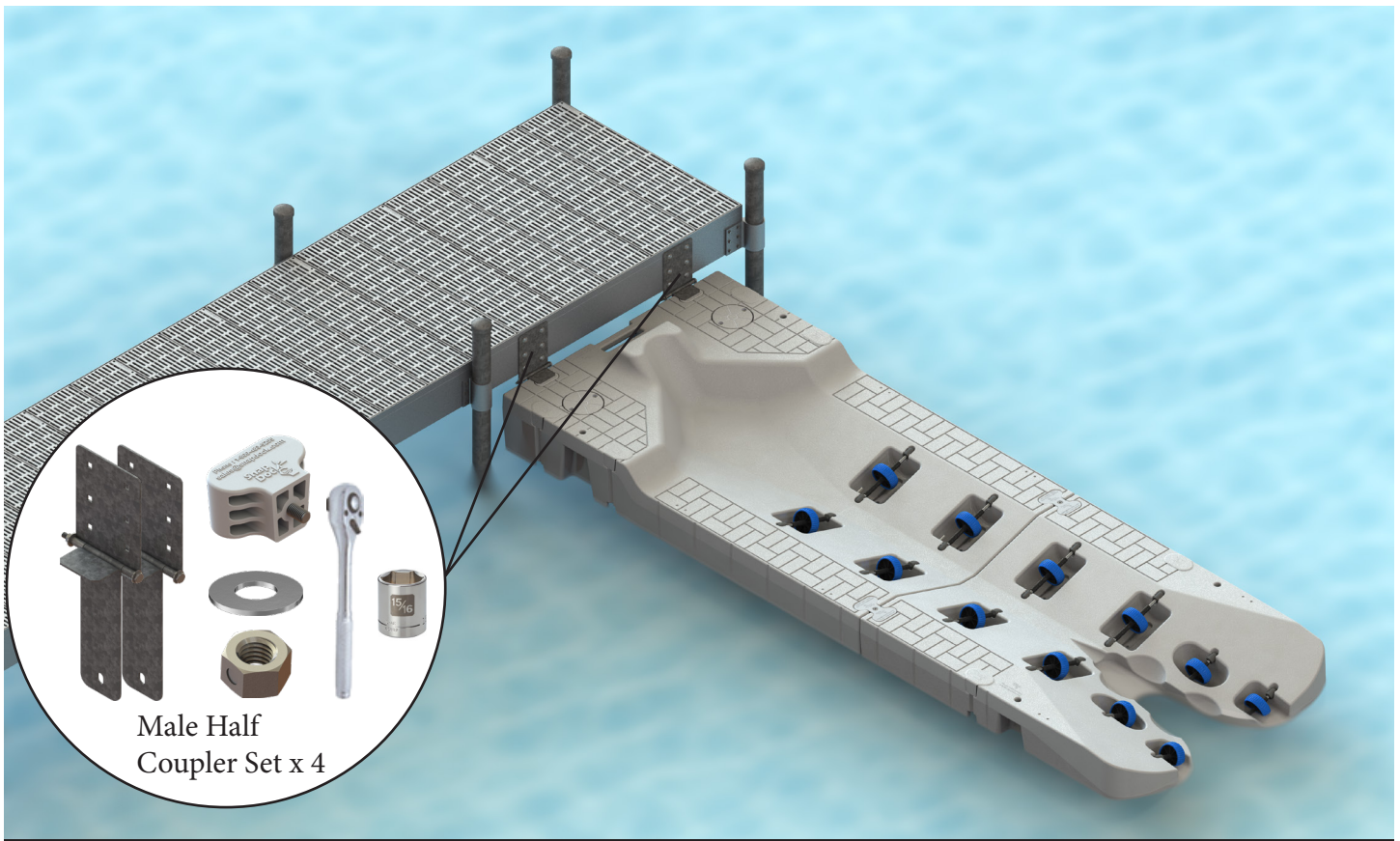
Winterizing Tip:

Installation of the hinges gives consumers the flexibility to detach the PWC Port when winterizing the port(s). Detach the port(s), and attach a rope to the front of the port(s). Next, remove the pin bolt from the hinges to fully disconnect from the existing platform. Using the attached rope, pull the port(s) to shore.



DISCLAIMER: Each individual installation is unique and customers need to seek consultation from an authorized Snap Dock Dealer. Snap Dock is not liable for installation defects or installation error.

Hinge Kit Adapter: Installation



- 1 Install the hinge kit to the fully assembled Snap Port using two male half couplers.
 - 1a Repeat step 1 to install the second hinge to the assembled Snap Port.
- 2 Maneuver the Snap Port to the desired platform. Use the dock universal plate to mark positions for attachment screws (Carriage Bolts).
- 3 Attach the dock universal plate to the existing floating dock, using screws (Carriage Bolts).
- 4 Move the Snap Port to existing floating dock; align holes on adaptor plates and Dock Assembly hinges. Insert bolts into holes and secure bolts with nuts.

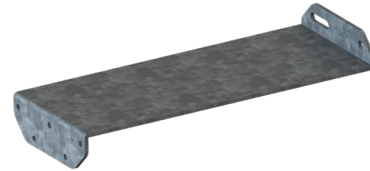
Note: Do NOT attempt to drill hinge kit adapter into the buoyancy modules of a floating dock as it will result in the sinking of the floating dock.

Stand Off Bracket Overview

Overview:

The stand-off bracket provides a fixed anchor solution that has the option to be tethered with other pipe anchor applications to attach a floating dock system or PWC ports to an existing platform.

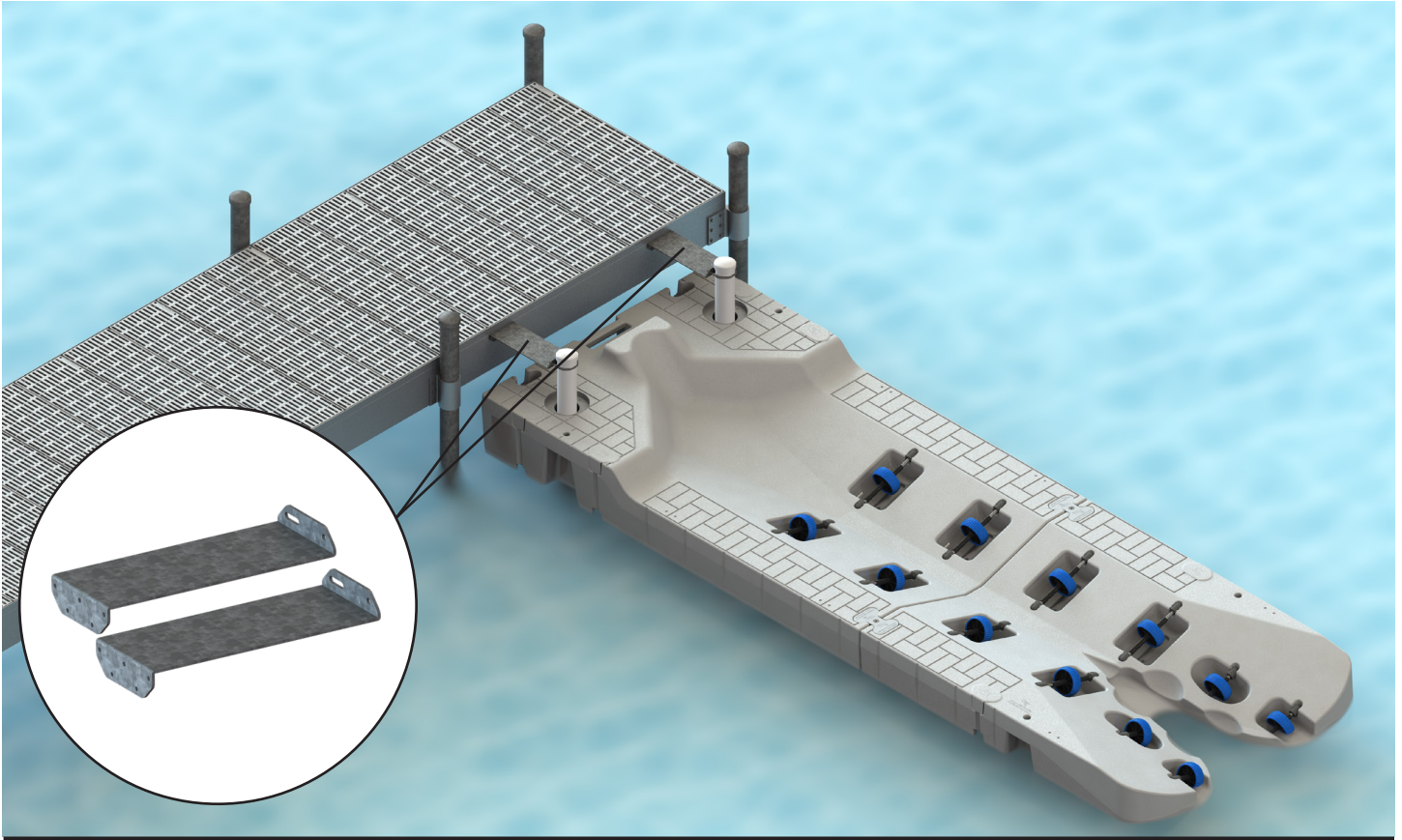
Product Name	SKU
Stand Off Bracket	SO Z BRKT



The stand-off bracket stabilizes the vertical position of a metal pipe to an existing platform mitigating the horizontal movement. This anchor method, paired with a pipe bracket or stand-alone installation will provide the vertical reinforcement needed as the floating PWC port fluctuates with the water levels throughout the season.

DISCLAIMER: Each individual installation is unique and customers need to seek consultation from an authorized Snap Dock Dealer. Snap Dock is not liable for installation defects or installation error.

Stand Off Bracket: Installation



- 1 Position stand off bracket roughly 2-4 inches down from the top of the pipe, and loosely tighten the “U” bolt around the pipe.
- 2 Align the bracket with the existing platform and mark where the stand off bracket’s holes line up on the dock.
- 3 Depending on the existing platform’s composition proceed to attach the stand off bracket using the best attachment method.

Note: Do NOT attempt to attach stand off brackets to a floating dock.

Snap Port Maintenance Information

Dock Cleaning Overview

Polyethylene docks are low maintenance dock systems that require an annual or bi-annual cleaning per industry standard. The following segment will go over the routine maintenance of owning a Snap Dock docking system to help maintain a beautiful Port system for years to come.

Routine Inspections

To extend the life of a Snap Port system, it is essential to visually inspect the dock bi-annually to ensure that all components like dock surface, couplers, bracket system, etc., are intact and free of debris.

Find The Right Cleaning Products

When cleaning your Snap Dock product, use non-corrosive and biodegradable cleaning products. Standard household products like baking soda or white vinegar mixed with water are environmentally safe. Avoid any cleaning products that have the following chemicals:

Ammonia
Anti-bacterial & Disinfectants
Butyl Glycol, Ethylene Glycol, or DEG Monobutyl Ether
Chlorine Bleach
Phthalates
Phosphates
Petroleum Solvents

To find more information on safe cleaning products visit [EPA Safe Choice](https://www.epa.gov/saferchoice)¹.

Cleaning Methods

Remember to remove any furniture, or large items on the dock prior to cleaning the dock to avoid items being pushed or blown into the water.

Snap Dock float products are made from LLDPE (Linear Low Density Polyethylene). To clean the product simply use warm water in combination with your choice of environmentally safe cleaning chemical and apply to the surface of the docks surface with a soft bristle brush.

Once the cleaning solution is applied to the surface of the dock, use a pressure washer that is 1500 psi or less to avoid discoloration or damage to the dock's surface (It is recommended to use a 40-degree fan tip "white head" on the pressure washer).

¹ United States Environmental Protection Agency, website (epa.gov/saferchoice/products), August 18, 2021

Snap Port Winter Maintenance Information

Below, we will underline, considerations on how Snap Dock's products to prevent ice damage during the winter months.

We recommend the removal and storage of Snap Dock products prior to ice forming unless the following requirements are met:

1. The port is located in a protected area with little ice movement.
2. The dock is secured to the shoreline via a line or rope.
3. Dock is marked for visibility under snow load.
4. Ensure all rollers have been removed and stored.

Please note that the Snap Dock's Snap Port product sits approximately two inches below the water surface. If the body of water freezes, the port is designed to pop out of the ice.

If any of the previous conditions are not met, Snap Dock recommends removing and storing the dock. Also, local dock removal or marking requirements vary by state, so check local guidelines to ensure removal processes are met.

Removal Maintenance

After the removal process, repeat the preferred cleaning method to the side and bottom portions of the modular dock system to ensure the product's life expectancy. Refer back to the cleaning methods section for best cleaning practices.